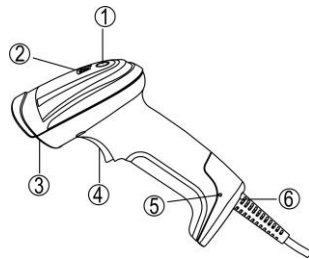


ZKB200 image barcode scanner quick guide

Note

- ☞ A standard packing includes a scanner, a USB cable and a CD (or a user manual).
- ☞ Accessories include a stand, a RS232 cable, and a 5V adaptor.
- ☞ Use a piece of dry and soft cloth when cleaning the scanner is in need.

Parts of the scanner



- ① LED
- ② Beeper
- ③ Scan window
- ④ Trigger
- ⑤ Release-hole of the cable
- ⑥ Cable interface port

Installing the cable

1. Switch off the host;
2. Refer to the below pictures, connect the host with the scanner based on different cables;
3. Ensure that all connections are secure.
4. Switch on the host system. If the installation is successful, the beeper will beep and LED will light.



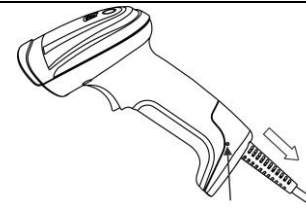
USB cable



RS232 cable

Removing the cable

1. Find the release-hole.
2. Insert a thin wire into the hole and pull out the cable gently.



Reading techniques

1. Press and hold the trigger, the scanner projects a green LED square which allows positioning the barcode within its field of view, and turns on the white LED for illumination.
2. When reading a barcode, the green LED square will be smaller when the scanner is closer to the barcode and larger when it is farther from the barcode. Please hold the scanner at an appropriate distance from the barcode, and center the green LED square on the barcode.
3. On a successful barcode reading, the scanner will beep once, and the green LED square and white LED will be turned off. Then the scanner transmits barcode message to the host.



Return default parameters and version information



Default value initialization

Note: If the host cannot receive data normally because the input speed of the scanner is too fast, please scan the barcode below:



Firmware version list

Programming instruction and example

Two programming modes have been provided as bellows:

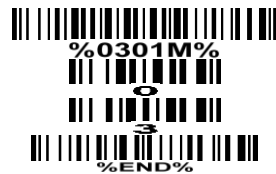
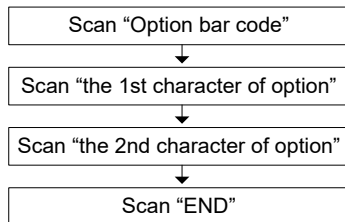
➤ Single-scan setting

Scan the appropriate
Single-scan setting

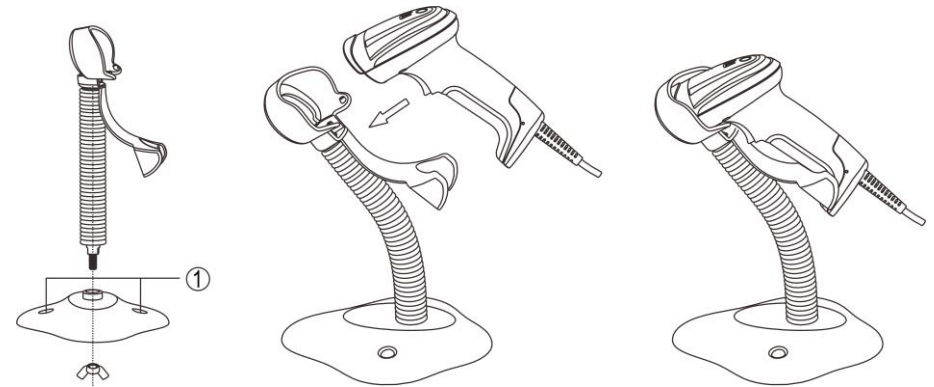


Example: to set Flow control to be XON/XOFF.

➤ Multiple-scan setting



Example: to set Flow control to be XON/XOFF.

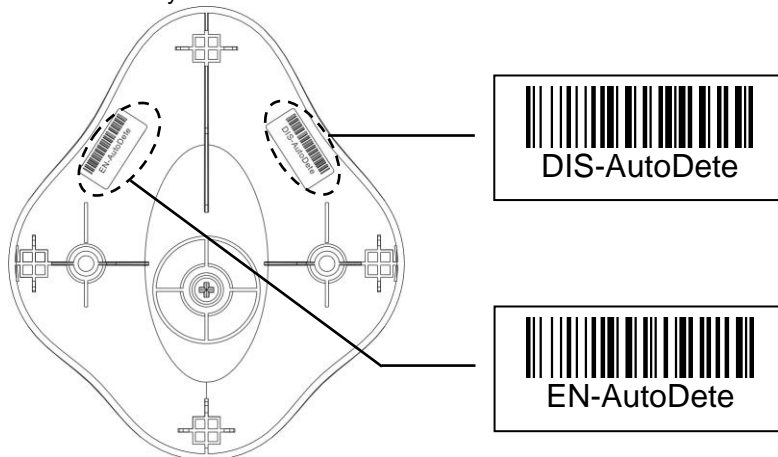


Quick setting to enable/disable Auto-detection

Note: The stand is an optional accessory.

Scan the barcode "EN-AutoDete" on the stand to enable Auto-detection.

Scan the barcode "DIS-AutoDete" on the stand to disable Auto-detection. Note: The Scanning mode will switch to momentary.



Note: The stand is an optional accessory.

1. See the figure above, tighten the screws.
2. Bend the neck to the desired position for scanning.
3. Screw mounting: Screw one #10 wood screw into each screw-mount-hole until the base of the stand is secured.
4. Tape mounting: ①Peel the paper liner off one side of each piece of tape and place the sticky surface over each of the three rectangular tape holders. ②Peel the paper liner off the exposed sides of each piece of tape and press the stand on a flat surface until it is secure.

Assembling the stand